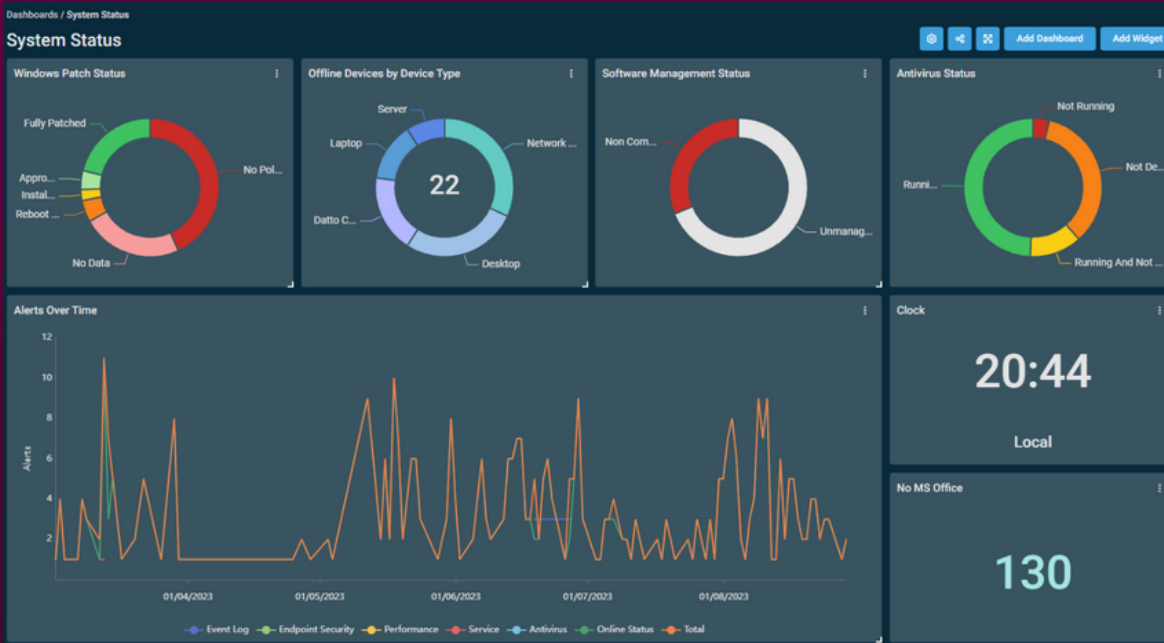


f5 Technology Group RMM Network Topology Maps = Complete Network Visibility

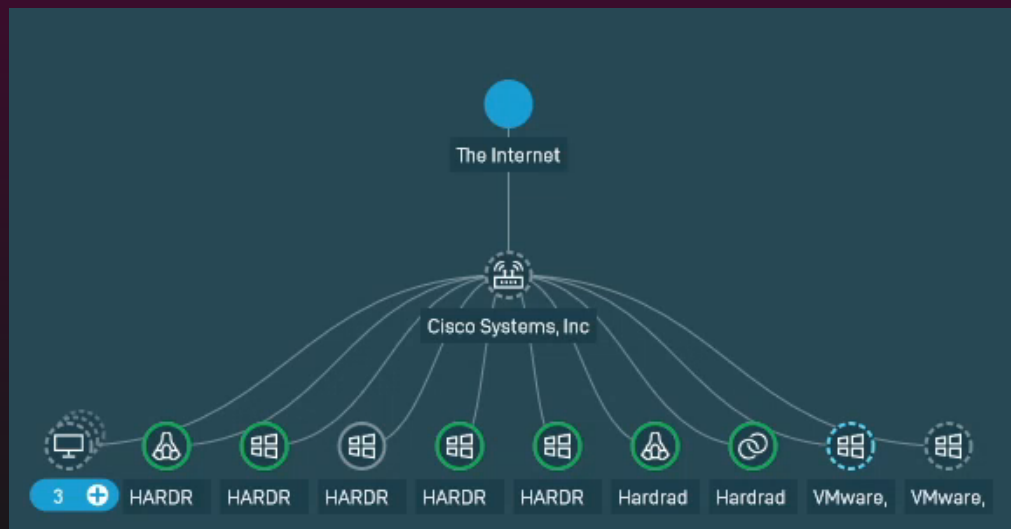
Regardless of the size of your entity, managing your network can be complex. To ensure connectivity, productivity, and security, endpoints, networks, users and cloud services all need to be monitored, supported and secured.

f5's RMM Network Topology Maps create visibility by continuously discovering and identifying every device on the network - not just those managed with f5's RMM - generating a visual layout of the network to show how devices are connected to each other, and quickly identifying where issues are on the network.



Benefits:

- Instant Device Views
- Faster Troubleshooting
- Single Click Remote Access
- Open, Instantaneous Alerts
- Risk Mitigation
- Automated Patch Mgmt.
- Scripting & Reporting
- Ransomware Detection



Windows, Linux, MacOS, VMWare, and SNMP Devices.